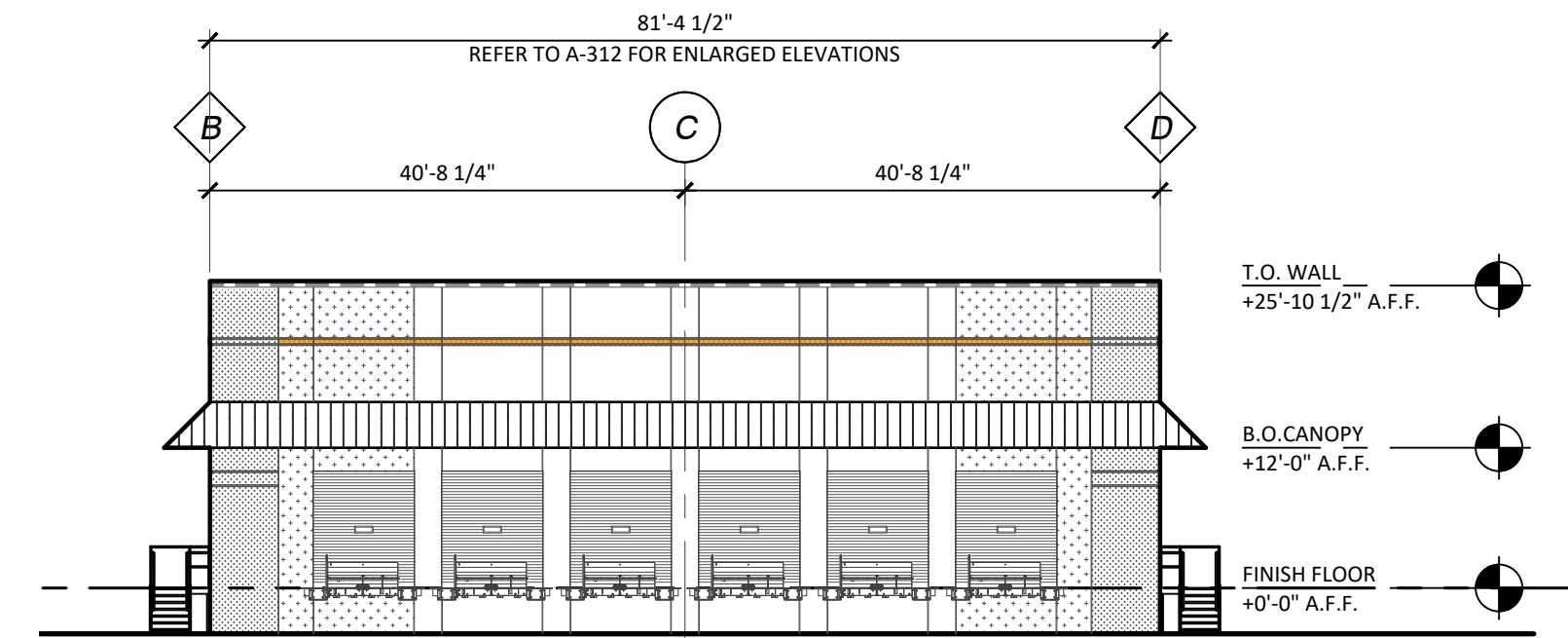


WEST ELEVATION

SCALE: 1/16" = 1'-0"

REFER TO 2/1A-312 FOR ENLARGED ELEVATION

4
1A-300

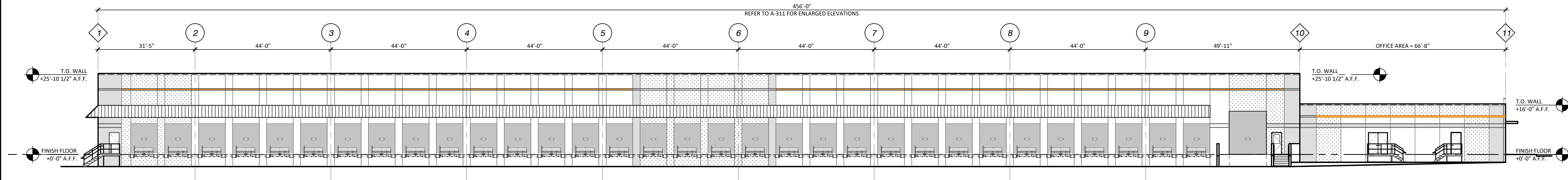


EAST ELEVATION

SCALE: 1/16" = 1'-0"

REFER TO 1/1A-312 FOR ENLARGED ELEVATION

3
1A-300

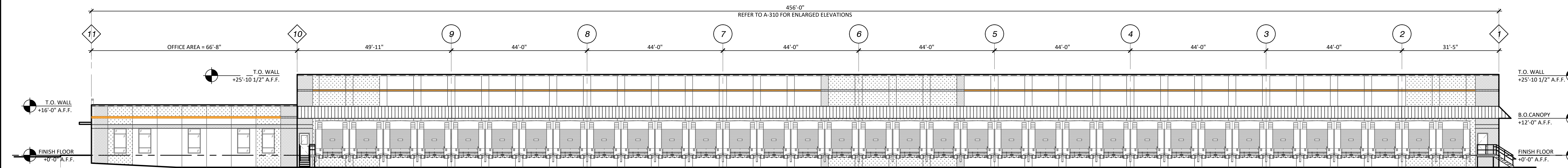


SOUTH ELEVATION

SCALE: 1/16" = 1'-0"

REFER TO 1A-311 FOR ENLARGED SOUTH ELEVATIONS

2
1A-300



NORTH ELEVATION

SCALE: 1/16" = 1'-0"

REFER TO 1A-310 FOR ENLARGED NORTH ELEVATIONS

1
1A-300

| MATERIAL LEGEND | |
|--|--|
| # | DESCRIPTION |
| ① | PAINTED PRECAST CONCRETE SHERWIN WILLIAMS "GAUNTLET GRAY" #SW7019 |
| ② | PAINTED PRECAST CONCRETE SHERWIN WILLIAMS "MINDFUL GRAY" #SW7015 |
| ③ | PAINTED PRECAST CONCRETE SHERWIN WILLIAMS "REPOSE GRAY" #SW7015 |
| ④ | PAINTED PRECAST CONCRETE SHERWIN WILLIAMS "PANTONE PYLE ORANGE" |
| ⑤ | MAPES CANOPY - CUSTOM COLORED TO MATCH SHERWIN WILLIAMS "MARIGOLD" #SW 6664 |
| ⑥ | METAL COPING - UNA CLAD, SLATE GRAY. |
| ⑦ | OVERHEAD DOORS - WHITE - INTERIOR AND EXTERIOR |
| ⑧ | BOLLARDS - OSHA YELLOW VINYL COVER |
| ⑨ | ALUMINUM WINDOW & DOOR FRAMES 4" FRAMING WITH INTEGRAL THERMAL BREAK CLEAR ANODIZED. U = 0.45, SHGC = 0.40 |
| ⑩ | VITRO SOLAR GRAY - SECOND SURFACE - NON-REFLECTIVE. WINDOWS U = 0.45 SHGC = 0.40, DOORS U = 0.80 SHGC = 0.40 |
| ⑪ | DOWNSPOUT NOZZLE |
| ⑫ | PVDF RESIN BASED COATING COLOR TO MATCH ADJACENT WALL |
| ⑬ | HOLLOW METAL DOOR AND FRAME. MAXIMUM U = 0.80. PAINT TO MATCH LIGHT GRAY COLOR 2. |
| ⑭ | CLEAR GLASS - NON-REFLECTIVE. |
| ⑮ | METAL CANOPY, MCCI "CHARCOAL GREY" |
| GENERAL NOTES | |
| 1. | "T" - TEMPERED GLASS |
| 2. | "S" - SPANDREL GLASS |
| PRECAST/ TILT-UP PAINT POWER WASH COMPLETE SURFACE & WIPE DOWN ALL JOINTS W/ DENATURED ALCOHOL. | |
| 3. | FIRST COAT: SHERWIN WILLIAMS LOXON PRIMER SECOND COAT: SHERWIN WILLIAMS ULTRACRETE FINE THIRD COAT: SHERWIN WILLIAMS ULTRACRETE FINE STRIPES: SHERWIN WILLIAMS SHERCRYL SEMI-GLOSS (2) COATS |
| 4. | ALL PRECAST PANEL JOINTS TO RECEIVE ONE-PART POLYURETHANE CAULK COMPATIBLE WITH ADJACENT PAINT SYSTEMS. |
| 5. | TYPICAL METAL STAIRWAY HANDRAIL APPLICATION: - APPLY TWO (2) COATS PRATT & LAMBERT CELLU-TONE ALKYL DRY INHIBITIVE ENAMEL |



10020 Aurora-Hudson Rd
Streetsboro, Ohio 44241
PH: (330) 528-3500
FX: (330) 528-0008
www.gdotdesign.com

Drawn By: ----

Checked By: ----

Project Number: ###-###-###

NOTICE
THIS ARCHITECTURAL AND ENGINEERING DRAWING IS GIVEN IN CONFIDENCE. NO USE OR DISSEMINATION MAY BE MADE WITHOUT PRIOR WRITTEN CONSENT OF THE ARCHITECT. ALL RIGHTS ARE HEREBY SPECIFICALLY RESERVED. GSD CONSTRUCTION

REVISIONS REFLECTED IN THESE DRAWINGS INVOLVE CHANGES TO CONTRACT PRICE PREVIOUSLY PROVIDED. CHANGE ORDERS WILL BE PROVIDED FOR ALL CHANGES. THESE CHANGES ARE NOT IN THE BASE BID.

DATES AND REVISIONS

11-14-2023
HIGHWAY CORRIDOR REVIEW



10020 Aurora-Hudson Rd
Streetsboro, Ohio 44241
PH: (330) 528-3500
FX: (330) 528-0008
www.geisco.net

A. Duie Pyle - NORTH EAST
TERMINAL FACILITY
CENTER DRIVE
NORTH EAST, MD 21901

ELEVATIONS

1A-300

ALL FREIGHT SERVICES SHALL BE PROVIDED BY A. DUIE PYLE. FREIGHT CHARGES WILL NOT BE ACCEPTED.

C:\Users\Todor\Geis Companies\GLSD Architects Group - Documents\OBESA Due Pyle - North East MD\CONSTRUCTION\DOCS\1D_NEW_A-300 ELEVATIONS.dwg 17/11/2023 Todor Todor 15:25

C:\Users\jdoerr\OneDrive - Geis Companies\GLSD Architects Group - Documents\OBSSA Due Pyle - North East MD\CONSTRUCTION DOCS\10 - NEW_A-310 ENLARGED ELEVATIONS NORTH.dwg 11/14/2023 Todd Ritter 15:15

| MATERIAL LEGEND | |
|--|--|
| # | DESCRIPTION |
| ① | PAINTED PRECAST CONCRETE SHERWIN WILLIAMS "GAUNTLET GRAY" #SW7019 |
| ② | PAINTED PRECAST CONCRETE SHERWIN WILLIAMS "MINDFUL GRAY" #SW7015 |
| ③ | PAINTED PRECAST CONCRETE SHERWIN WILLIAMS "REPOSE GRAY" #SW7015 |
| ④ | PAINTED PRECAST CONCRETE SHERWIN WILLIAMS "PANTONE PYLE ORANGE" #SW6664 |
| ⑤ | MAPES CANOPY - CUSTOM COLORED TO MATCH SHERWIN WILLIAMS "MARIGOLD" #SW 6664 |
| ⑥ | METAL COPING - UNA CLAD, SLATE GRAY. |
| ⑦ | OVERHEAD DOORS - WHITE - INTERIOR AND EXTERIOR |
| ⑧ | BOLLARDS - OSHA YELLOW VINYL COVER |
| ⑨ | ALUMINUM WINDOW & DOOR FRAMES 4" FRAMING WITH INTEGRAL THERMAL BREAK CLEAR ANODIZED. U = 0.45, SHGC = 0.40 |
| ⑩ | VITRO SOLAR GRAY - SECOND SURFACE - NON-REFLECTIVE. WINDOWS U = 0.45 SHGC = 0.40, DOORS U = 0.80 SHGC = 0.40 |
| ⑪ | DOWNSPOUT NOZZLE |
| ⑫ | PVDF RESIN BASED COATING COLOR TO MATCH ADJACENT WALL |
| ⑬ | HOLLOW METAL DOOR AND FRAME. MAXIMUM U = 0.80. PAINT TO MATCH LIGHT GRAY COLOR 2. |
| ⑭ | CLEAR GLASS - NON-REFLECTIVE. |
| ⑮ | METAL CANOPY, MSCI "CHARCOAL GREY" |
| GENERAL NOTES | |
| 1. | "T" - TEMPERED GLASS |
| 2. | "S" - SPANDREL GLASS |
| PRECAST/ TILT-UP PAINT POWER WASH COMPLETE SURFACE & WIPE DOWN ALL JOINTS W/ DENATURED ALCOHOL. | |
| 3. | FIRST COAT: SHERWIN WILLIAMS LOXON PRIMER SECOND COAT: SHERWIN WILLIAMS ULTRACRETE FINE THIRD COAT: SHERWIN WILLIAMS ULTRACRETE FINE STRIPES: SHERWIN WILLIAMS SHERCRYL SEMI-GLOSS (2) COATS |
| 4. | ALL PRECAST PANEL JOINTS TO RECEIVE ONE-PART POLYURETHANE CAULK COMPATIBLE WITH ADJACENT PAINT SYSTEMS. |
| 5. | TYPICAL METAL STAIRWAY HANDRAIL APPLICATION: - APPLY TWO (2) COATS PRATT & LAMBERT CELLU-TONE ALKYD RUST INHIBITIVE ENAMEL |

GDOT DESIGN
10020 Aurora-Hudson Rd
Streetsboro, Ohio 44241
PH: (330) 528-3500
FX: (330) 528-0008
www.gdotdesign.com

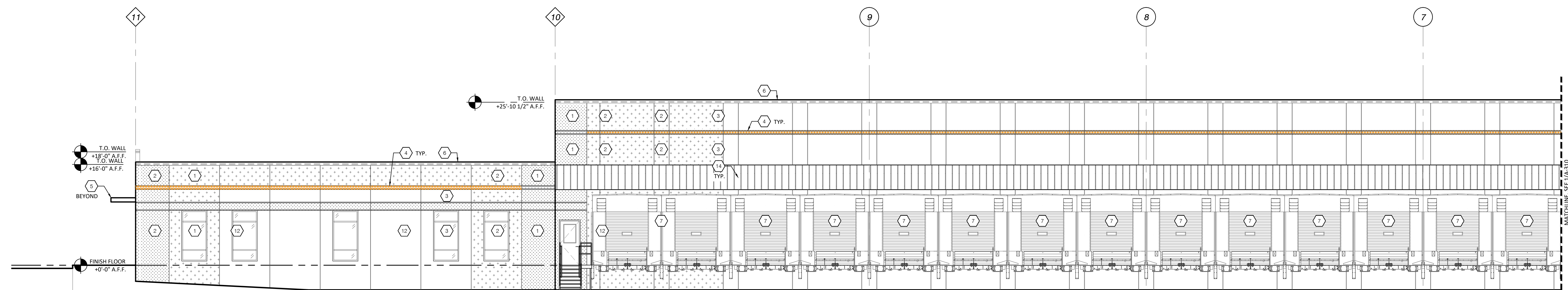
Drawn By: ----
Checked By: ----
Project Number: ###-###-###

NOTICE
THIS ARCHITECTURAL AND ENGINEERING DRAWING IS GIVEN IN CONFIDENCE. NO USE OR DISSEMINATION MAY BE MADE WITHOUT PRIOR WRITTEN CONSENT OF THE ARCHITECT. ALL RIGHTS ARE HEREBY SPECIFICALLY RESERVED. GEIS CONSTRUCTION

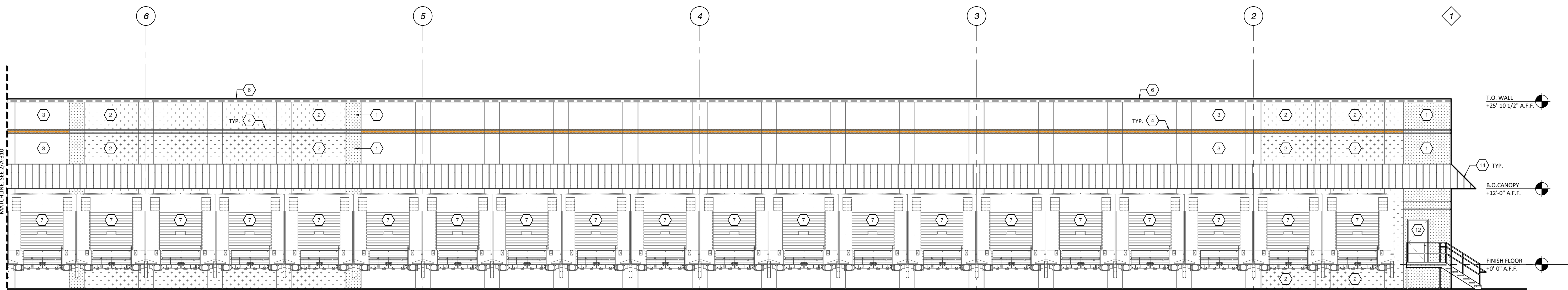
REVISIONS REFLECTED IN THESE DRAWINGS INVOLVE CHANGES TO CONTRACT PRICE PREVIOUSLY PROVIDED. CHANGE ORDERS WILL BE PROVIDED FOR ALL CHANGES. THESE CHANGES ARE NOT IN THE BASE BID.

DATES AND REVISIONS

| | |
|------------|-------------------------|
| 11-14-2023 | HIGHWAY CORRIDOR REVIEW |
|------------|-------------------------|



ENLARGED ELEVATION - NORTH
SCALE: 1/8" = 1'-0"
2
A-310



ENLARGED ELEVATION - NORTH
SCALE: #####
1
A-310

ALL FREIGHT SERVICES SHALL BE PROVIDED BY A. DUJIE PYLE. FREIGHT CHARGES WILL NOT BE ACCEPTED.

GEIS COMPANIES
10020 Aurora-Hudson Rd
Streetsboro, Ohio 44241
PH: (330) 528-3500
FX: (330) 528-0008
www.geisco.net

A. Dujie Pyle™ - NORTH EAST
TERMINAL FACILITY
CENTER DRIVE
NORTH EAST, MD 21901

ENLARGED ELEVATIONS - NORTH
A-310

C:\Users\trdr\Geis Companies\GLS\Architects Group - Documents\OBESA Due Pyle - North East MD\CONSTRUCTION\DOCS\10_NEW_A-311_ENLARGED ELEVATIONS SOUTH.dwg 11/14/2023 Todd Ritter 15:11

| MATERIAL LEGEND | |
|--|--|
| # | DESCRIPTION |
| ① | PAINTED PRECAST CONCRETE SHERWIN WILLIAMS "GAUNTLET GRAY" #SW7019 |
| ② | PAINTED PRECAST CONCRETE SHERWIN WILLIAMS "MINDFUL GRAY" #SW7015 |
| ③ | PAINTED PRECAST CONCRETE SHERWIN WILLIAMS "REPOSE GRAY" #SW7015 |
| ④ | PAINTED PRECAST CONCRETE SHERWIN WILLIAMS "PANTONE PYLE ORANGE" #SW6664 |
| ⑤ | MAPES CANOPY - CUSTOM COLORED TO MATCH SHERWIN WILLIAMS "MARIGOLD" #SW 6664 |
| ⑥ | METAL COPING - UNA CLAD, SLATE GRAY. |
| ⑦ | OVERHEAD DOORS - WHITE - INTERIOR AND EXTERIOR |
| ⑧ | BOLLARDS - OSHA YELLOW VINYL COVER |
| ⑨ | ALUMINUM WINDOW & DOOR FRAMES 4" FRAMING WITH INTEGRAL THERMAL BREAK CLEAR ANODIZED. U = 0.45, SHGC = 0.40 |
| ⑩ | VITRO SOLAR GRAY - SECOND SURFACE - NON-REFLECTIVE. WINDOWS U = 0.45 SHGC = 0.40, DOORS U = 0.80 SHGC = 0.40 |
| ⑪ | DOWNSPOUT NOZZLE |
| ⑫ | PVD RESIN BASED COATING COLOR TO MATCH ADJACENT WALL |
| ⑬ | HOLLOW METAL DOOR AND FRAME. MAXIMUM U = 0.80. PAINT TO MATCH LIGHT GRAY COLOR 2. |
| ⑭ | CLEAR GLASS - NON-REFLECTIVE. |
| ⑮ | METAL CANOPY, MSCI "CHARCOAL GREY" |
| GENERAL NOTES | |
| 1. | "T" - TEMPERED GLASS |
| 2. | "S" - SPANDREL GLASS |
| PRECAST/ TILT-UP PAINT POWER WASH COMPLETE SURFACE & WIPE DOWN ALL JOINTS W/ DENATURED ALCOHOL. | |
| 3. | FIRST COAT: SHERWIN WILLIAMS LOXON PRIMER SECOND COAT: SHERWIN WILLIAMS ULTRACRETE FINE THIRD COAT: SHERWIN WILLIAMS ULTRACRETE FINE STRIPES: SHERWIN WILLIAMS SHERCRYL SEMI-GLOSS (2) COATS |
| 4. | ALL PRECAST PANEL JOINTS TO RECEIVE ONE-PART POLYURETHANE CAULK COMPATIBLE WITH ADJACENT PAINT SYSTEMS. |
| 5. | TYPICAL METAL STAIRWAY HANDRAIL APPLICATION: - APPLY TWO (2) COATS PRATT & LAMBERT CELLU-TONE ALKYD RUST INHIBITIVE ENAMEL |

GDOT DESIGN
 10020 Aurora-Hudson Rd
 Streetsboro, Ohio 44241
 PH: (330) 528-3500
 FX: (330) 528-0008
 www.gdotdesign.com

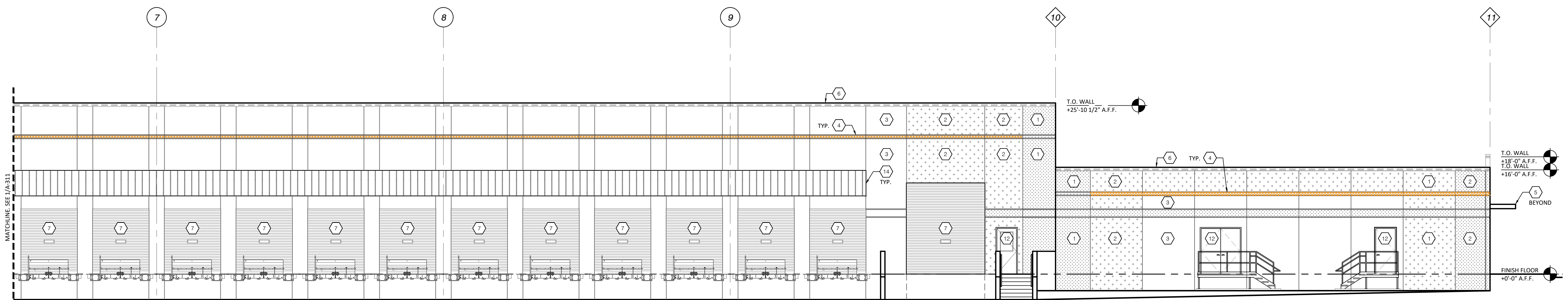
Drawn By: ----
 Checked By: ----
 Project Number: ###-###-###

NOTICE
 THIS ARCHITECTURAL AND ENGINEERING DRAWING IS GIVEN IN CONFIDENCE. NO USE OR DISSEMINATION MAY BE MADE WITHOUT PRIOR WRITTEN CONSENT OF THE ARCHITECT. ALL RIGHTS ARE HEREBY SPECIFICALLY RESERVED. GEIS CONSTRUCTION

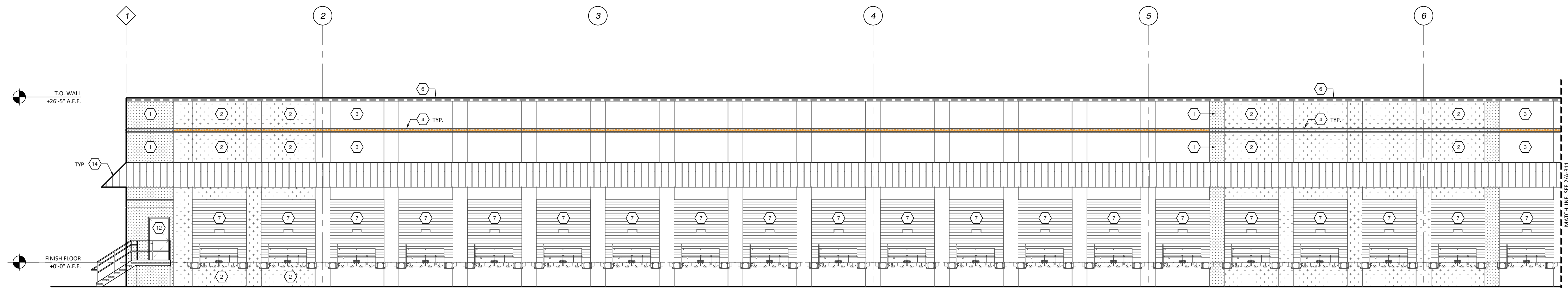
REVISIONS REFLECTED IN THESE DRAWINGS INVOLVE CHANGES TO CONTRACT PRICE PREVIOUSLY PROVIDED. CHANGE ORDERS WILL BE PROVIDED FOR ALL CHANGES. THESE CHANGES ARE NOT IN THE BASE BID.

DATES AND REVISIONS

| | |
|------------|-------------------------|
| 11-14-2023 | HIGHWAY CORRIDOR REVIEW |
|------------|-------------------------|



ENLARGED ELEVATION - SOUTH
 SCALE: #####
 2
 A-311



ENLARGED ELEVATION - SOUTH
 SCALE: 1/8" = 1'-0"
 1
 A-311

ALL FREIGHT SERVICES SHALL BE PROVIDED BY A. DUJIE PYLE. FREIGHT CHARGES WILL NOT BE ACCEPTED.

GEIS COMPANIES
 10020 Aurora-Hudson Rd
 Streetsboro, Ohio 44241
 PH: (330) 528-3500
 FX: (330) 528-0008
 www.geisco.net

A. Duje Pyle™ - NORTH EAST
TERMINAL FACILITY
 CENTER DRIVE
 NORTH EAST, MD 21901

ENLARGED ELEVATIONS - SOUTH
A-311

C:\Users\toddr\Documents\Geis Companies\GLSD Architects Group - Documents\OBSEA Due Pyle - North East MD\CONSTRUCTION\DOCS\ID_NEW_A-312_ENLARGED ELEVATIONS.dwg 11/14/2023 Todd Fitter 15:25

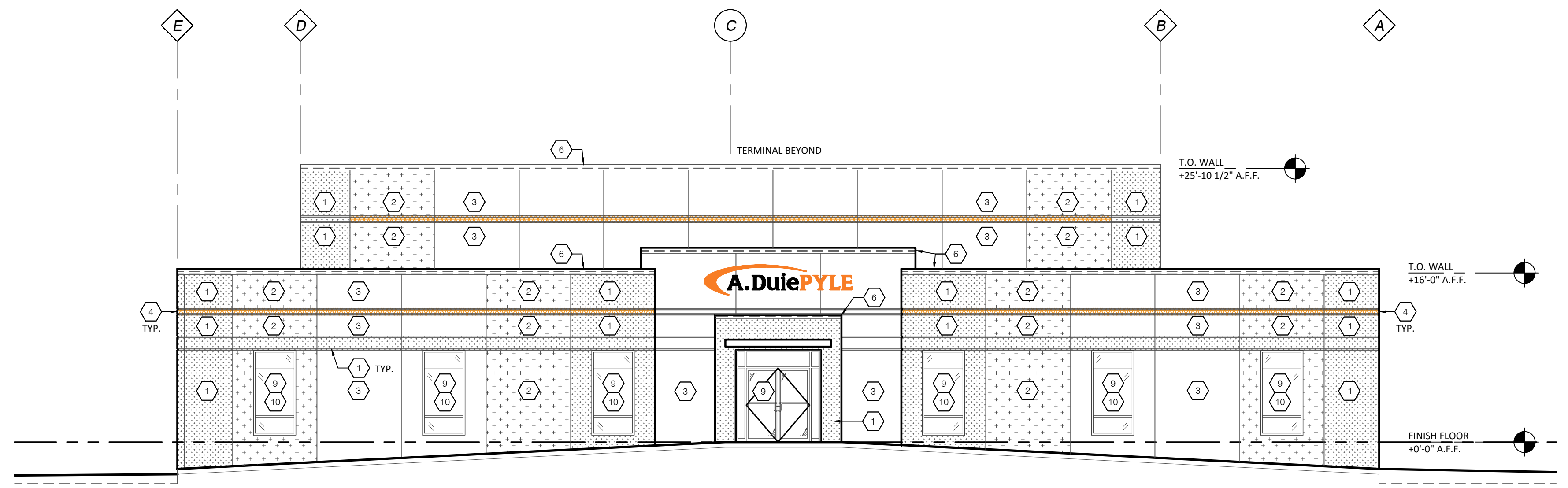
| MATERIAL LEGEND | |
|--|--|
| # | DESCRIPTION |
| ① | PAINTED PRECAST CONCRETE SHERWIN WILLIAMS "GAUNTLET GRAY" #SW7019 |
| ② | PAINTED PRECAST CONCRETE SHERWIN WILLIAMS "MINDFUL GRAY" #SW7015 |
| ③ | PAINTED PRECAST CONCRETE SHERWIN WILLIAMS "REPOSE GRAY" #SW7015 |
| ④ | PAINTED PRECAST CONCRETE SHERWIN WILLIAMS "PANTONE PYLE ORANGE" |
| ⑤ | MAPES CANOPY - CUSTOM COLORED TO MATCH SHERWIN WILLIAMS "MARIGOLD" #SW 6664 |
| ⑥ | METAL COPING - UNA CLAD, SLATE GRAY. |
| ⑦ | OVERHEAD DOORS - WHITE - INTERIOR AND EXTERIOR |
| ⑧ | BOLLARDS - OSHA YELLOW VINYL COVER |
| ⑨ | ALUMINUM WINDOW & DOOR FRAMES 4" FRAMING WITH INTEGRAL THERMAL BREAK CLEAR ANODIZED. U = 0.45, SHGC = 0.40 |
| ⑩ | VITRO SOLAR GRAY - SECOND SURFACE - NON-REFLECTIVE. WINDOWS U = 0.45 SHGC = 0.40, DOORS U = 0.80 SHGC = 0.40 |
| ⑪ | DOWNSPOUT NOZZLE |
| ⑫ | PAVIR RESIN BASED COATING COLOR TO MATCH ADJACENT WALL |
| ⑬ | HOLLOW METAL DOOR AND FRAME. MAXIMUM U = 0.80. PAINT TO MATCH LIGHT GRAY COLOR 2. |
| ⑭ | CLEAR GLASS - NON-REFLECTIVE. |
| ⑮ | METAL CANOPY, MCCI "CHARCOAL GREY" |
| GENERAL NOTES | |
| 1. | "T" - TEMPERED GLASS |
| 2. | "S" - SPANDREL GLASS |
| PRECAST/ TILT-UP PAINT POWER WASH COMPLETE SURFACE & WIPE DOWN ALL JOINTS W/ DENATURED ALCOHOL. | |
| 3. | FIRST COAT: SHERWIN WILLIAMS LOXON PRIMER SECOND COAT: SHERWIN WILLIAMS ULTRACRETE FINE THIRD COAT: SHERWIN WILLIAMS ULTRACRETE FINE STRIPES: SHERWIN WILLIAMS SHERCRYL SEMI-GLOSS (2) COATS |
| 4. | ALL PRECAST PANEL JOINTS TO RECEIVE ONE-PART POLYURETHANE CAULK COMPATIBLE WITH ADJACENT PAINT SYSTEMS. |
| 5. | TYPICAL METAL STAIRWAY HANDRAIL APPLICATION: - APPLY TWO (2) COATS PRATT & LAMBERT CELLU-TONE ALKYD RUST INHIBITIVE ENAMEL |

GDOT DESIGN
10020 Aurora-Hudson Rd
Streetsboro, Ohio 44241
PH: (330) 528-3500
FX: (330) 528-0008
www.gdotdesign.com

Drawn By: ----
Checked By: ----
Project Number: ###-###-###

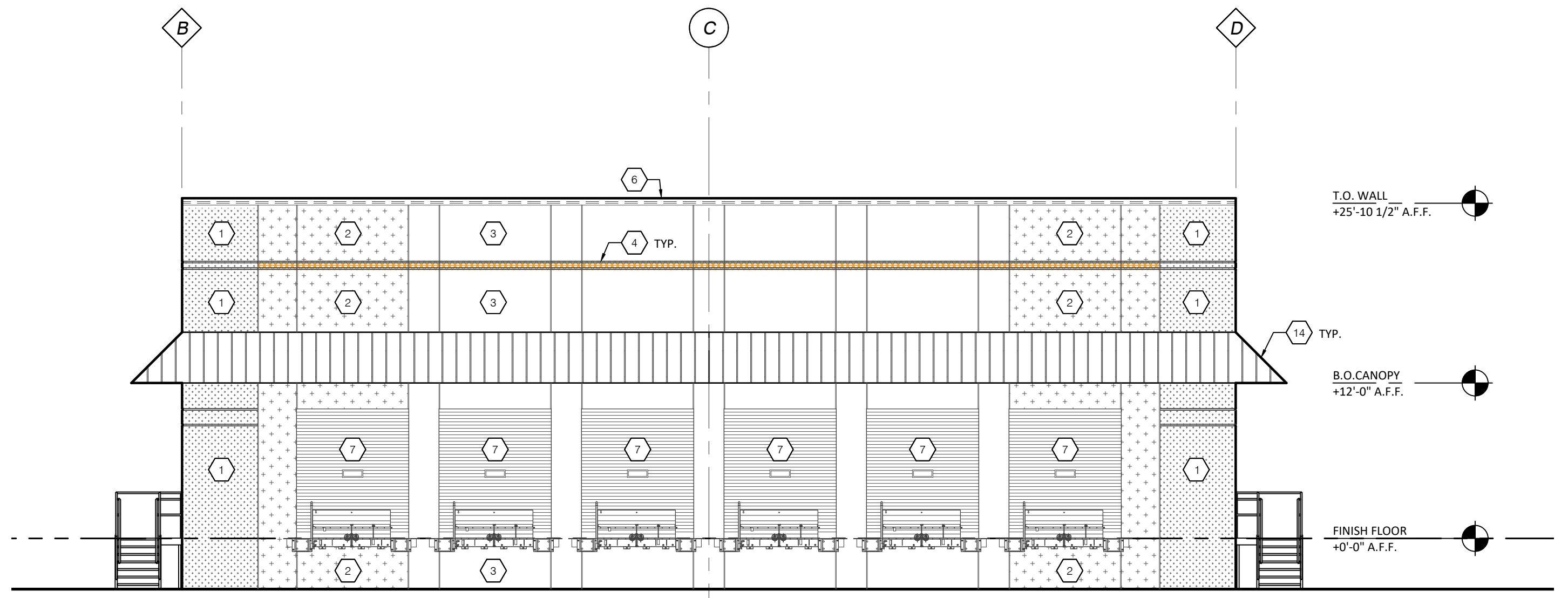
NOTICE
THIS ARCHITECTURAL AND ENGINEERING DRAWING IS GIVEN IN CONFIDENCE. NO USE OR DISSEMINATION MAY BE MADE WITHOUT PRIOR WRITTEN CONSENT OF THE ARCHITECT. ALL RIGHTS ARE HEREBY SPECIFICALLY RESERVED. GEIS CONSTRUCTION
REVISIONS REFLECTED IN THESE DRAWINGS INVOLVE CHANGES TO CONTRACT PRICE PREVIOUSLY PROVIDED. CHANGE ORDERS WILL BE PROVIDED FOR ALL CHANGES. THESE CHANGES ARE NOT IN THE BASE BID.

DATES AND REVISIONS
11-14-2023
HIGHWAY CORRIDOR REVIEW



ENLARGED ELEVATION - WEST
SCALE: 1/8" = 1'-0"

2
1A-312



ENLARGED ELEVATION - EAST
SCALE: 1/8" = 1'-0"

1
1A-312

GEIS COMPANIES
10020 Aurora-Hudson Rd
Streetsboro, Ohio 44241
PH: (330) 528-3500
FX: (330) 528-0008
www.geisco.net

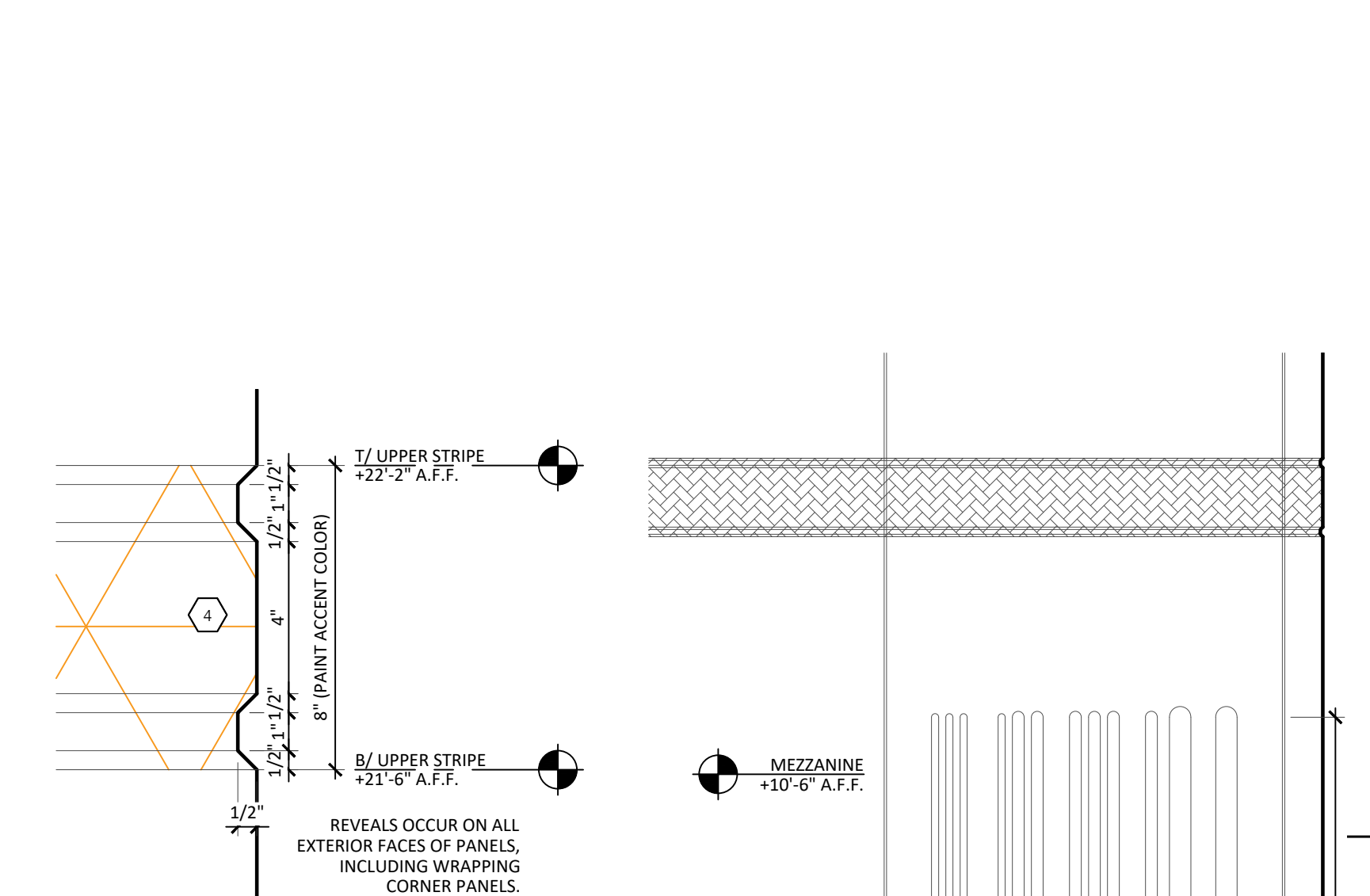
A. DuiePYLE - NORTH EAST
TERMINAL FACILITY
CENTER DRIVE
NORTH EAST, MD 21901

ENLARGED ELEVATIONS

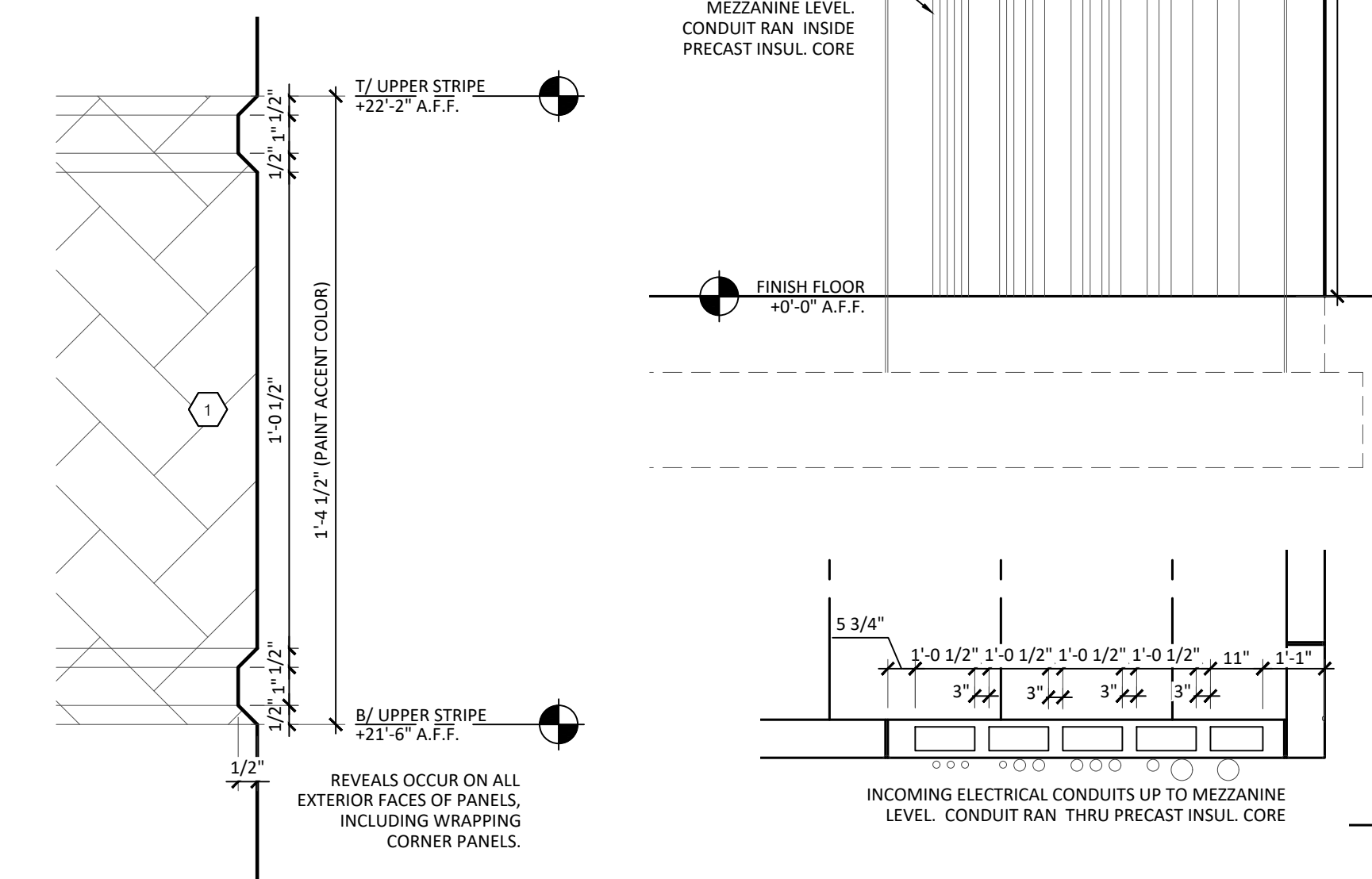
1A-312

ALL FREIGHT SERVICES SHALL BE PROVIDED BY A. DUIE PYLE. FREIGHT CHARGES WILL NOT BE ACCEPTED.

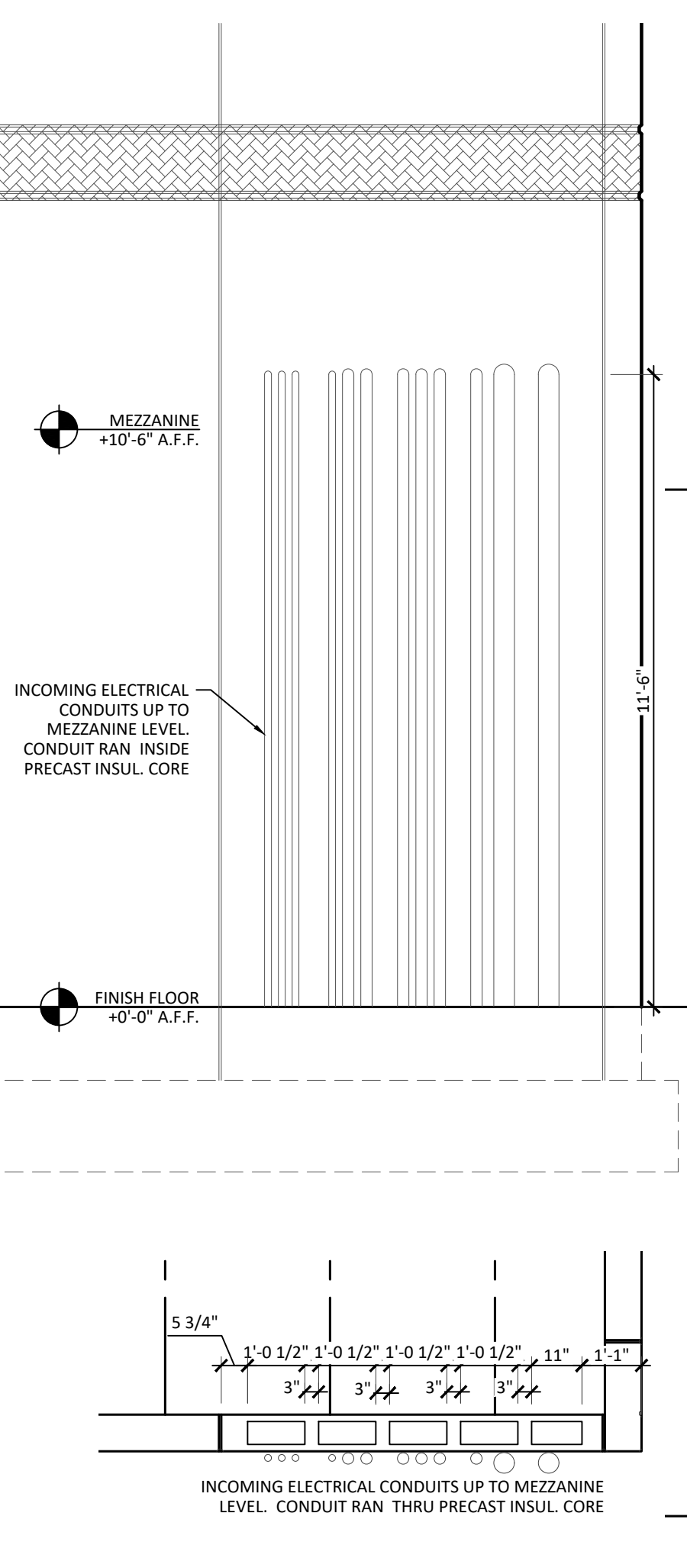
C:\Users\tradr\OneDrive\Documents\GSD Architects Group - Documents\OBESA Due Pyle - North East MD\CONSTRUCTION DOCS\MAINTENANCE BUILDING\LD_NEM_MB_2A-300_ELEVATIONS.dwg 11/14/2023 Toef Riter 15:27



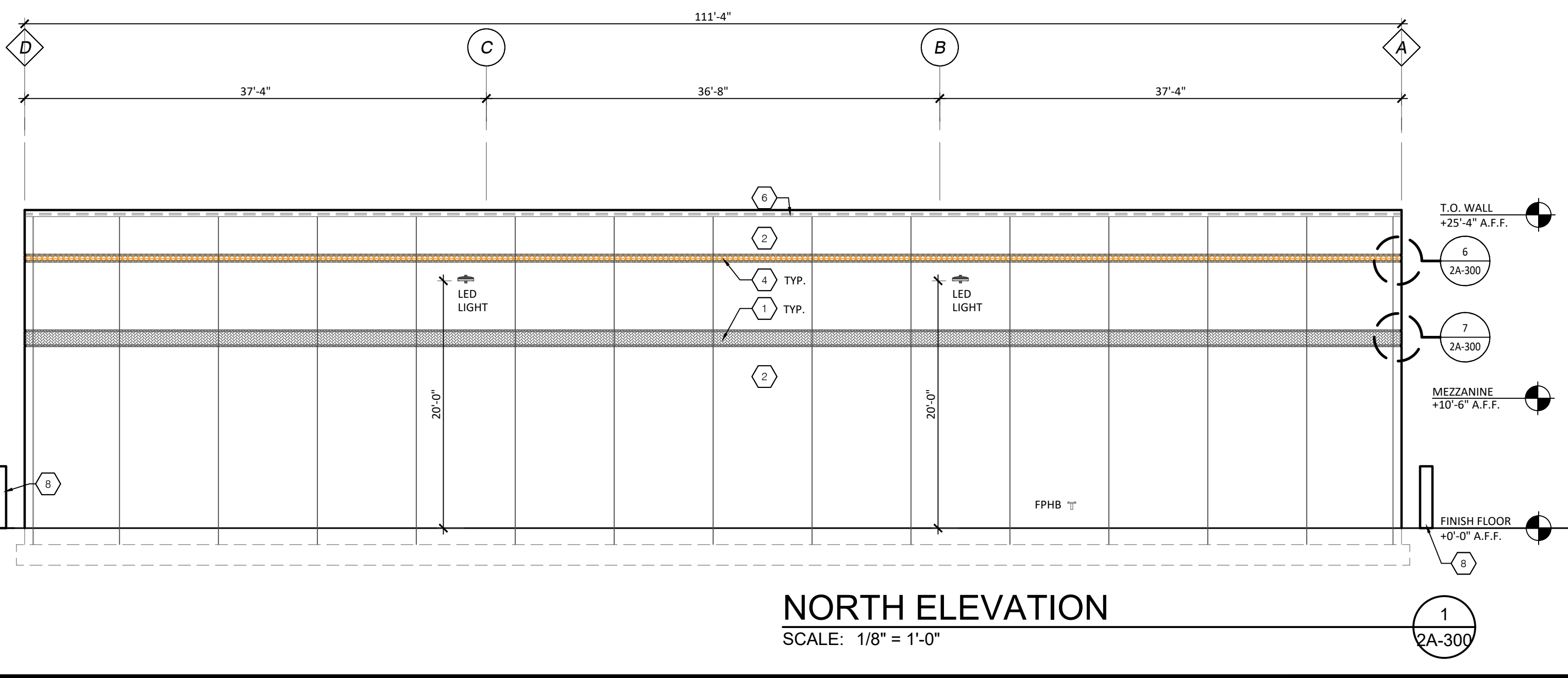
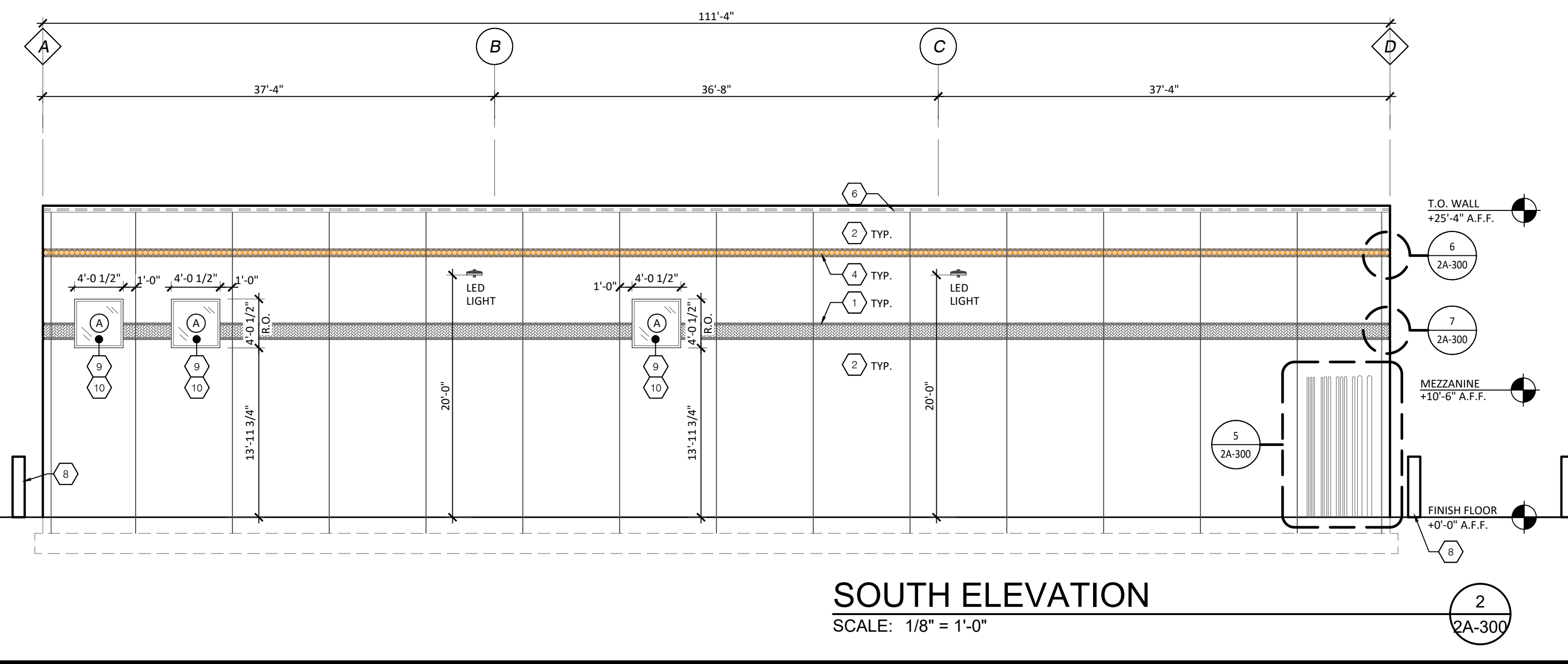
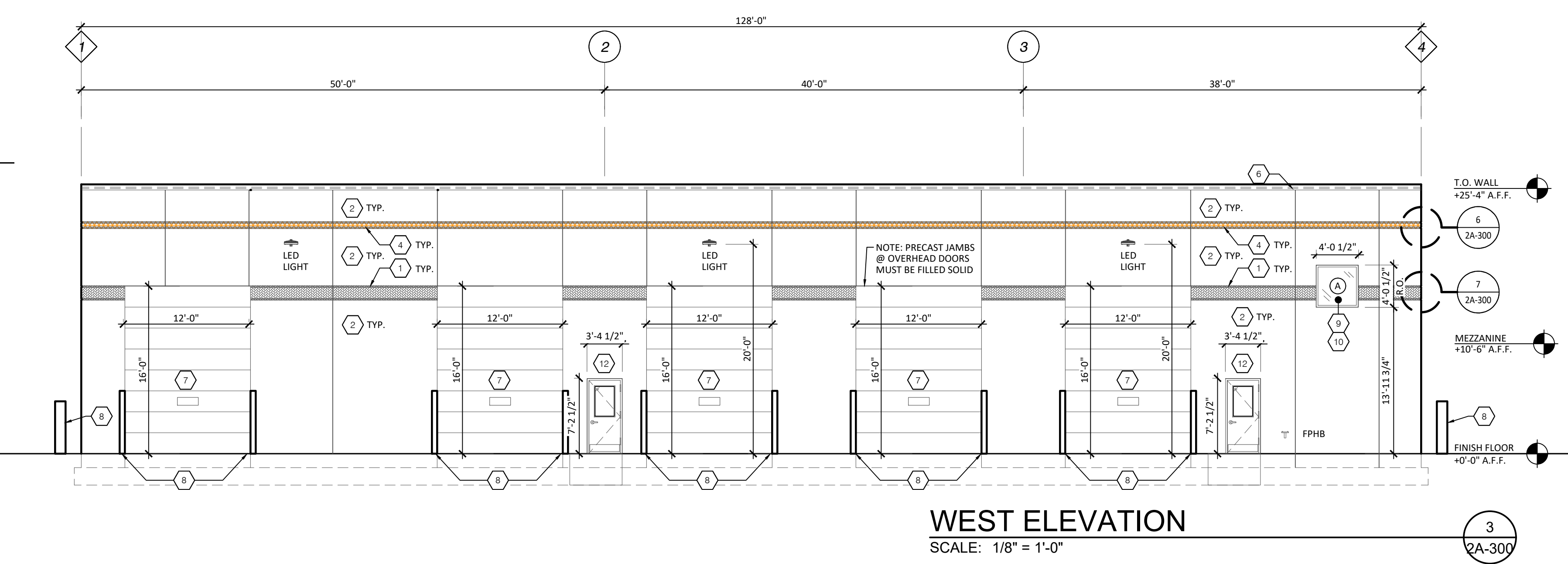
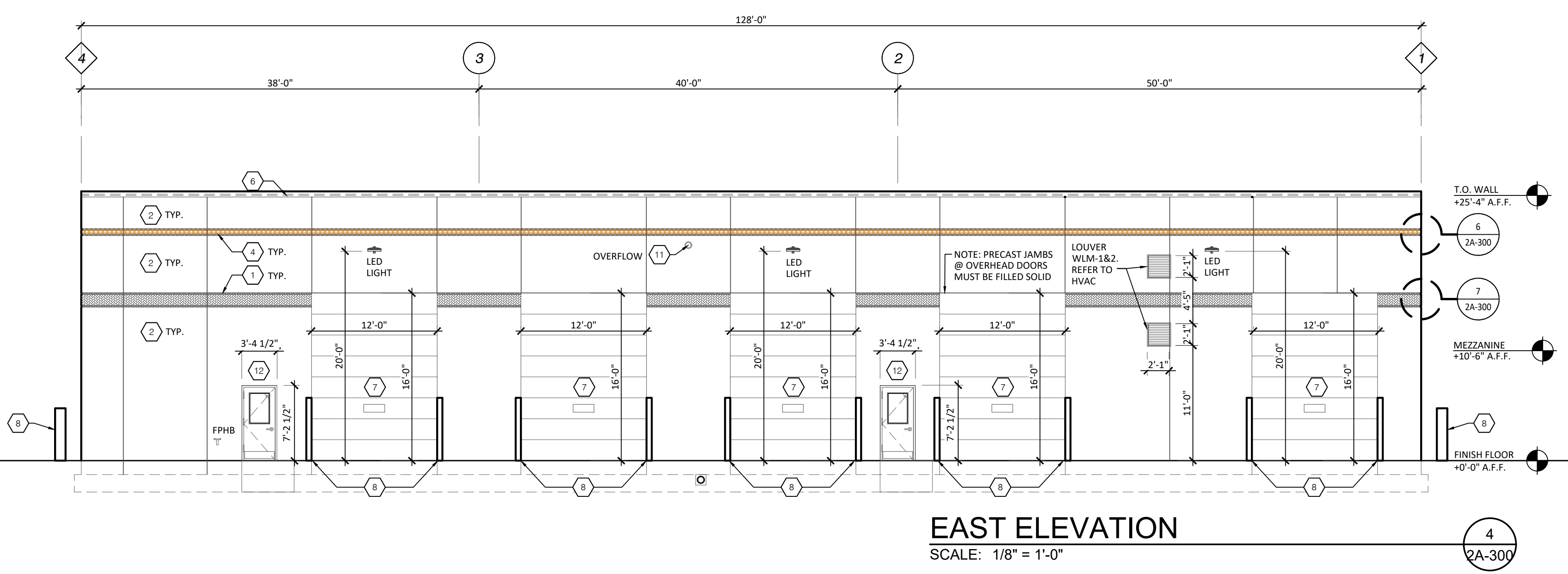
UPPER STRIPE
SCALE: 3" = 1'-0"



LOWER STRIPE
SCALE: 3" = 1'-0"



CONDUIT DETAIL
SCALE: 3/8" = 1'-0"



| MATERIAL LEGEND | |
|-----------------|---|
| # | DESCRIPTION |
| 1 | PAINTED PRECAST CONCRETE SHERWIN WILLIAMS "GAUNTLET GRAY" #SW7019 |
| 2 | PAINTED PRECAST CONCRETE SHERWIN WILLIAMS "MINDFUL GRAY" #SW7015 |
| 3 | PAINTED PRECAST CONCRETE SHERWIN WILLIAMS "REPOSE GRAY" #SW7015 |
| 4 | PAINTED PRECAST CONCRETE SHERWIN WILLIAMS "PANTONE PYLE ORANGE" |
| 5 | MAPES CANOPY - CUSTOM COLORED TO MATCH SHERWIN WILLIAMS "MARGOLD" #SW 6664 |
| 6 | METAL COPING, UNA CLAD, SLATE GRAY. |
| 7 | OVERHEAD DOORS - WHITE - INTERIOR AND EXTERIOR |
| 8 | BOLLARDS - OSHA YELLOW VINYL COVER |
| 9 | ALUMINUM WINDOW & DOOR FRAMES 4" FRAMING WITH INTEGRAL THERMAL BREAK CLEAR ANODIZED, U ² =0.45, SHGC ² =0.40 |
| 10 | VITRO SOLAR GRAY - SECOND SURFACE - NON-REFLECTIVE. WINDOWS U ² =0.45 SHGC ² =0.40, DOORS U ² =0.80 SHGC ² =0.40 |
| 11 | DOWNSPOUT NOZZLE |
| 12 | PVDF RESIN BASED COATING COLOR TO MATCH ADJACENT WALL |
| 13 | HOLLOW METAL DOOR AND FRAME. MAXIMUM U ² =0.80. PAINT TO MATCH LIGHT GRAY COLOR 2. |
| 14 | CLEAR GLASS - NON-REFLECTIVE. |
| 15 | METAL CANOPY, MBCI "CHARCOAL GREY" |
| GENERAL NOTES | |
| 1. | "T" = TEMPERED GLASS |
| 2. | "S" = SPANDREL GLASS |
| 3. | PRECAST/ TILT-UP PAINT POWER WASH COMPLETE SURFACE & WIPE DOWN ALL JOINTS W/ DENATURED ALCOHOL. |
| 4. | FIRST COAT: SHERWIN WILLIAMS LOXON PRIMER SECOND COAT: SHERWIN WILLIAMS ULTRACRETE FINE THIRD COAT: SHERWIN WILLIAMS ULTRACRETE FINE STRIPES: SHERWIN WILLIAMS SHERCRYL SEMI-GLOSS (2) COATS ALL PRECAST PANEL JOINTS TO RECEIVE ONE-PART POLYURETHANE CAULK COMPATIBLE WITH ADJACENT PAINT SYSTEMS. |
| 5. | TYPICAL METAL STAIRWAY HANDRAIL APPLICATION: - APPLY TWO (2) COATS PRATT & LAMBERT CELLU-TONE ALKYL DRY INHIBITIVE ENAMEL |

ALL FREIGHT SERVICES SHALL BE PROVIDED BY A. DUJIE PYLE. FREIGHT CHARGES WILL NOT BE ACCEPTED.

GDOT DESIGN
10020 Aurora-Hudson Rd
Streetsboro, Ohio 44241
PH: (330) 528-3500
FX: (330) 528-0008
www.gdotdesign.com

Drawn By: ----
Checked By: ----
Project Number: ##-##-###

NOTICE
THIS ARCHITECTURAL AND ENGINEERING DRAWING IS GIVEN IN CONFIDENCE. NO USE OR DISSEMINATION MAY BE MADE WITHOUT PRIOR WRITTEN CONSENT OF THE ARCHITECT. ALL RIGHTS ARE HEREBY SPECIFICALLY RESERVED. GSD CONSTRUCTION

REVISIONS REFLECTED IN THESE DRAWINGS INVOLVE CHANGES TO CONTRACT PRICE PREVIOUSLY PROVIDED. CHANGE ORDERS WILL BE PROVIDED FOR ALL CHANGES. THESE CHANGES ARE NOT IN THE BASE BID.

DATES AND REVISIONS

| DATE | REVISION |
|------------|-------------------------|
| 11-14-2023 | HIGHWAY CORRIDOR REVIEW |

GEIS COMPANIES
10020 Aurora-Hudson Rd
Streetsboro, Ohio 44241
PH: (330) 528-3500
FX: (330) 528-0008
www.geisco.net

A. Dujie Pyle - NORTH EAST MAINTENANCE BUILDING CENTER DRIVE NORTH EAST, MD 21901

ELEVATIONS

2A-300